

ADVANCED WELDING

in focus



WE WELCOME DEMANDING CLIENTS who expect the best from their products

By keeping to this approach, we have evolved into one of the foremost suppliers on the market today. Our investment in one of Europe's largest robotic welding facilities is proof of our firm faith in the future. Our success rests on continually developing our staff and machinery.

COMPETENCIES AND CERTIFICATION

The Swedish engineering industry has developed at a rapid rate over the last few years. Integration into the EU has seen common welding regulations and standards gradually being introduced across the continent. New materials and new methods have called for constructive changes in the way we work. Further training is essential in order to compete in a fiercely competitive market.

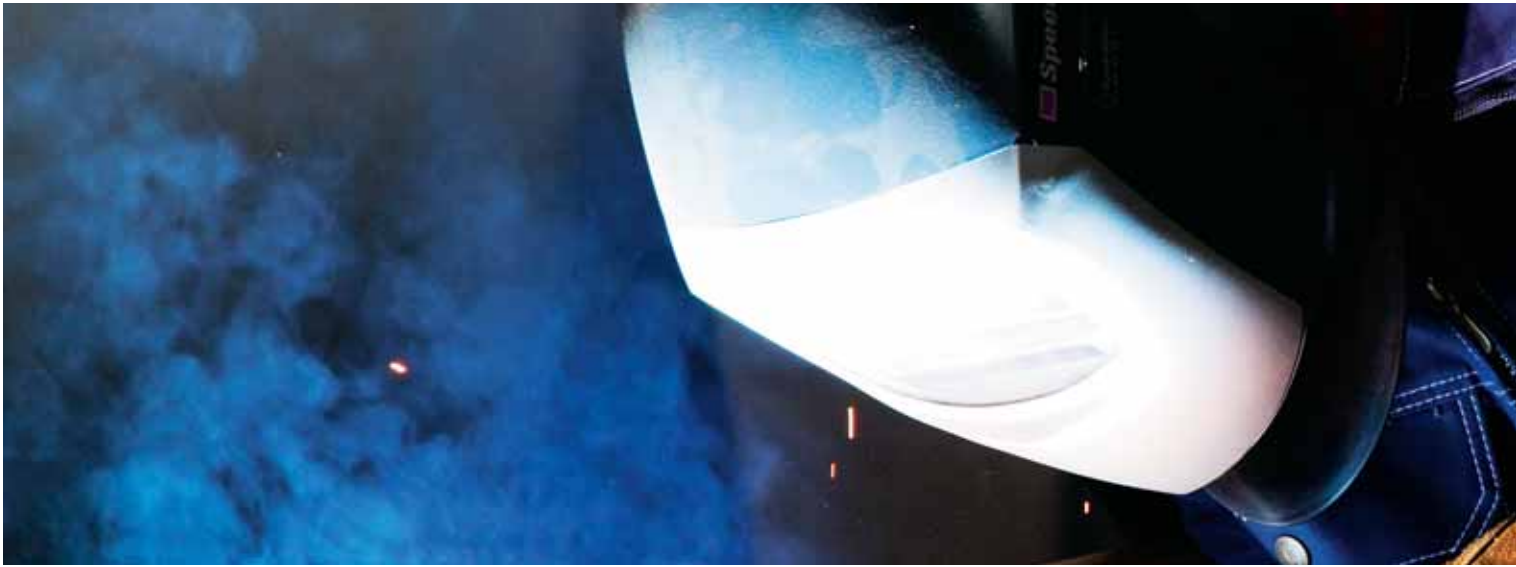
At Sonstorp, we have always considered training and development to be words of honour. By taking on a number of challenging projects, we have

steadily grown and know exactly what is required to continue our strategy of tackling advanced welding commissions.

Certification is crucial for companies aiming to work on the frontline with large-scale, complex projects. Through certification we are able to guarantee fully traceable processes, including the type of welding methods employed, who has carried out the work and the materials used, as well as what credentials are required.

At Sonstorps Mekaniska AB, we intend to continue working on the frontline in the future.





TOTAL SUPPLIER COMMITMENT AND FLEXIBILITY

Over the years we have fostered long-term relationships with our clients by adopting a broad-scale, flexible approach to our work. Our project managers can oversee your order at each stage of the manufacturing chain – from initial order to final delivery. We coordinate all documentation, such as material, production, and testing certificates. This is vital for guaranteeing traceability.

We can also provide input during the design phase. Ideally we enter a project at an early stage, contributing with advice on welding and design.

Over the years, we have built up broad-ranging, close relationships with a variety of subcontractors in areas including materials supply, cutting machining, non-destructive testing, and surface treatment.

We can also vouch that our subcontractors work in accordance with required standards. As a result, our clients can have complete confidence in us as a total supplier assuming full control of the entire manufacturing process.

OUR PRODUCT AREAS

We manufacture advanced welded structures using the majority of materials available on the market. Our clients continually put us to the test – and we've been privileged to work with some of the most demanding.

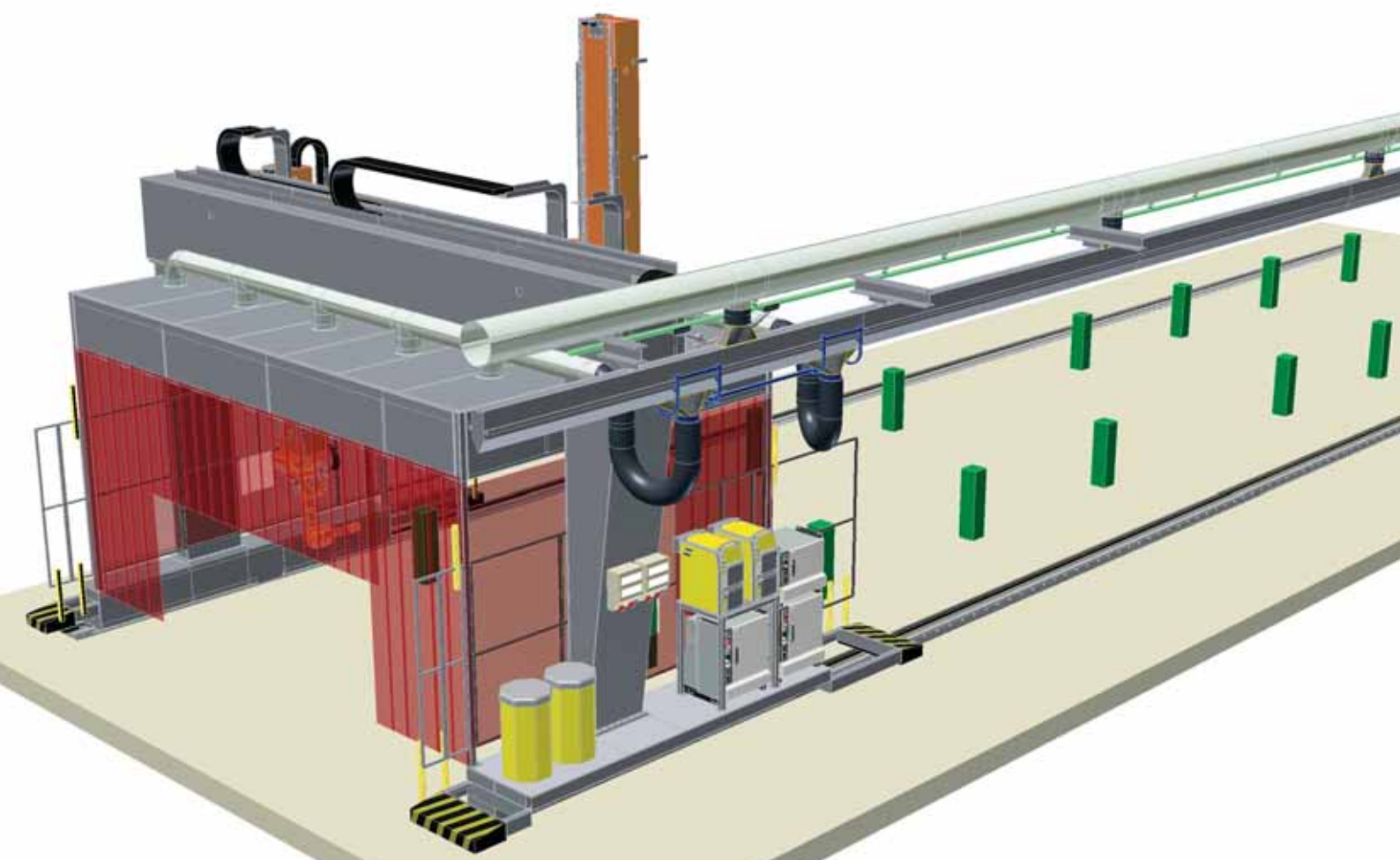
Our biggest products include base frames for steam-gas turbines, which can measure up to 25 metres in length and weigh just over 40 tonnes.

All our products are subject to testing and inspection. This includes load testing on lifting tackle and hydrostatic testing on pressure vessels, in addition to other types of non-destructive testing, to ensure welds and materials conform to applicable quality requirements.

Examples of products we manufacture:

- Base frames for steam-gas turbines
- Assembly tools
- Pipe systems
- Pressure vessels
- Fuel tanks

” We have always considered training and development to be words of honour



INVESTMENT INVITES OPPORTUNITY

Fifty meters in length, our new robotic welding facility features three welding stations. One of Europe's largest robotic stations, it can produce objects up to five metres in width. The robot is able to carry out almost all welding that is currently performed manually. This investment will allow us to streamline our work flows while creating greater flexibility in our processes.



SAFETY CONSIDERATIONS AN INTEGRAL PART OF THE PROCESS

Our products are designed to endure substantial levels of stress over long periods – even under demanding climatic conditions.

For us, maintaining a firm commitment to safety is a matter of course, underpinning the entire organisation and its internal processes. Our workforce is a vital element of this approach. We only use materials and working methods that do not entail health risks or the risk of injury. Naturally, we use statutory protective equipment.

At Sonstorp, commitment to safety is routine in the process of producing world class products.

WORLD CLASS WELDING

Boasting considerable experience, our team of welders are accustomed to both assembly and service work. We continually train our welding corps in association with EWE (European Welding Engineer).

A number of our welders hold European Welding Specialist accreditation. Moreover, we are accredited with SS-EN ISO 3834-2:2005 (Quality requirements for fusion welding of metallic materials – Part 2: Comprehensive quality requirements (ISO 3834-2:2005)).

We also hold further industry accreditation.





FOCUSING ON THE FUTURE

Established in 1963, Sonstorps Mekaniska has grown and thrived over the years. Right from the start, we have provided advanced welding expertise. Through widespread staff training, this expertise has been improved and refined since the company was formed.

The company is characterised by non-hierarchical reporting relationships, placing the main focus on the client – an approach that has helped us develop and maintain excellent relationships with our clients.

Sonstorp continues growing to this day, and our investment in one of Europe's largest robotic welding facilities underlines our ambition to continue expanding while maintaining high quality and satisfied customers.



Sonstorps Mekaniska

Sörskatevägen 52

610 12 Hällestad

Sweden

Phone +46 122-505 00

E-mail info@sonstorpsmekaniska.se

www.sonstorpsmekaniska.se